



AUTOMOTIVE SERVICES & MECHANICAL REPAIRS

In the fast lane - Motorway Breakdown



What to do

Should you experience car problems while driving on a multi lane highway there are a few essential things to do.

- Indicate your intention and pull over to the nearest emergency breakdown lane or emergency stopping bay **DO NOT STOP IN ANY DRIVING LANES.**
- Get as far over as you can in an emergency stopping lane away from passing traffic.
- Turn on your hazard lights and parking lights.
- Get out of your car from the passenger side if possible. If you have passengers get them out of the car too. Take your keys with you.
- Stand well clear of your car, preferably behind any roadside barriers and well away from the road.
- If you have children or pets with you tell the

operator and ask them to prioritise the response.

- Call for a breakdown service - Hopefully you are a member of a roadside breakdown service such as [RACQ](#) - Phone 13 1111 but if not, you can always contact the Motorway Breakdown Response Service on **13 19 40** for free assistance to move you and your vehicle to a designated safe location.
- Most importantly don't panic and make keeping yourself and your passengers safe the priority. Cars can be replaced, people can't!

SOUTHPORT CAR SERVICE

PHONE: 5591 3611

Monday - Friday 7am - 5pm

WWW.SOUTHPORTCARSERVICE.COM

Night Vision - Can you see clearly at night?



It's a dark night with little to no street lighting and no road lane markings. Outside of our major cities most suburban street lighting is poor so it's important to have correctly aimed, bright lights to keep you and pedestrians and other road users safe while driving at night.

Daylight driving demands serious concentration what with all the in-car gadgets, children distracting you, pedestrians who seem to casually jay walk and other road users, cyclists included who show little concern for others.

Having clear night vision is critical to the safety of you, your passengers and other road users. Having bright lights is not enough to ensure you don't get into trouble if they are incorrectly aimed. We've all been blinded by oncoming traffic causing brief moments of 'blindness'. We've all nearly hit a pedestrian wearing dark clothes walking home along poorly lit roads or just missed the cyclist whose bike was poorly lit.

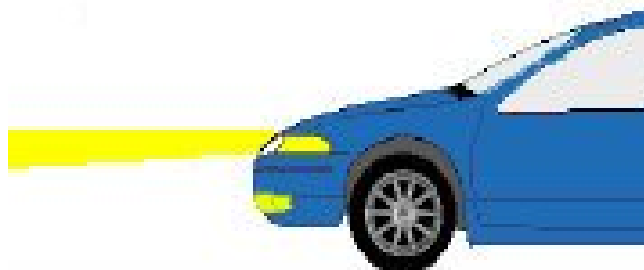
The message is as clear as daylight - make sure your lights are bright and correctly aimed and take

extra care while driving at night, especially if its raining.

Other factors that can affect your vision whilst driving are

- Your vision - have you had your eyes tested recently. Poor eyesight creeps up on us.
- Dirty or damaged windscreens
- Unserviceable wiper blades
- Extremely dark window tint
- Discoloured or damaged headlight lenses
- Poor headlight brightness
- Badly aimed headlights

Australia's wide open spaces and outback roads present night drivers with other issues such as road kill. Wild animals can be attracted and stunned by an approaching vehicles headlights so take extra care when travelling outback roads.



The next time your car is in for a service ask your friendly mechanic to check and report on the condition of your lights and adjust or replace them as necessary. Safe motoring.

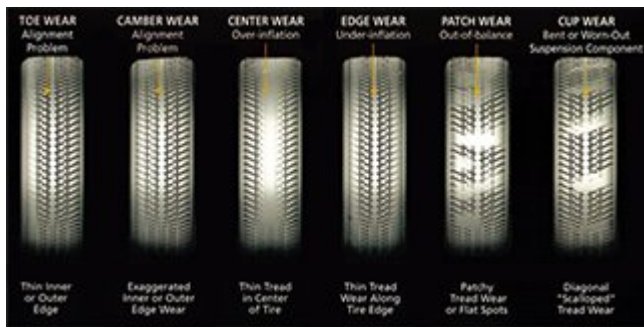
Tyre Condition & Pressure

When you consider that every time you drive your trusted car there is approximately 8mm of tread (new tyres) separating you from the road. Tyres wear differently depending upon the vehicle, road surfaces, driving habits and brands.

What is important is to make sure your tyres are roadworthy.

The legal minimum tread depth may vary between states. As a safe guideline 2mm should be considered a minimum tread depth.

Another important factor is **tyre pressure**. All manufacturers provide recommendations relating to tyre size, rating and operating pressure. Again these are recommendations and will vary depending on brand, load carrying capacity, towing, driving conditions, sealed roads, dirt roads and the list goes on. Ask your local mechanic for tyre pressure information. **Tyre pressures are important and will affect how your tyres wear.**



Some signs of dangerous tyres may be visible and include:

- Uneven wear - worn edges, worn centre
- Bulges in tyre wall
- Tread under 2mm depth
- Steel belt protruding
- Flat spots
- Out of balance wheels

Tyres and tyre pressures are important and should be checked regularly in between service schedules. Worn or damaged suspension and steering components will also contribute to uneven tyre wear and can be dangerous to the way your car responds to road conditions and steering control.

Your Four Wheel Drive

Is your 4x4 bush ready? Are you planning on going

bush with your newly acquired four-wheel drive? Many Aussies do and the outback provides unlimited destinations and experiences which can test your vehicles endurance, your patience and your driving skills.

Keep in mind that preparation and the right vehicle are key to successful adventures in the outback. Planning your outback adventure is crucial as once you leave the bright city lights behind and the sealed roads run out its you and the great Australian bush.

Not all 4WDs are suitable or equipped for remote outback adventures. The family SUV may have 4WD capability but not necessarily be suitable for serious off-road work. Consider the following:

- Adequate ground clearance
- Underbody protection
- Heavy duty towing points
- Strong suspension
- Off road tyres with spare
- Traction control and hill descent control
- A snorkel if you are planning deep water crossings
- Bull bar and good driving lights

These are a few and there are many more important factors you should consider before setting off into the wide blue yonder.

I've left the most important item to mention till last and that is your personal safety and that of your passengers. Personal safety is critical above all else. It's important to let someone know your travel plans and to keep in daily contact. Communication equipment and plenty of battery power as well as plenty of water, food supplies and emergency rations are essential.

Some of you who are new to the 4WD experience or are thinking about buying one may benefit from some basic tips and tricks. We will be writing 4WD articles on our [Blog](#) in the near future so keep an eye out.

In the meantime if you need help or advice **call us on 5591 3611** or [fill out the online form](#). Safe Motoring.